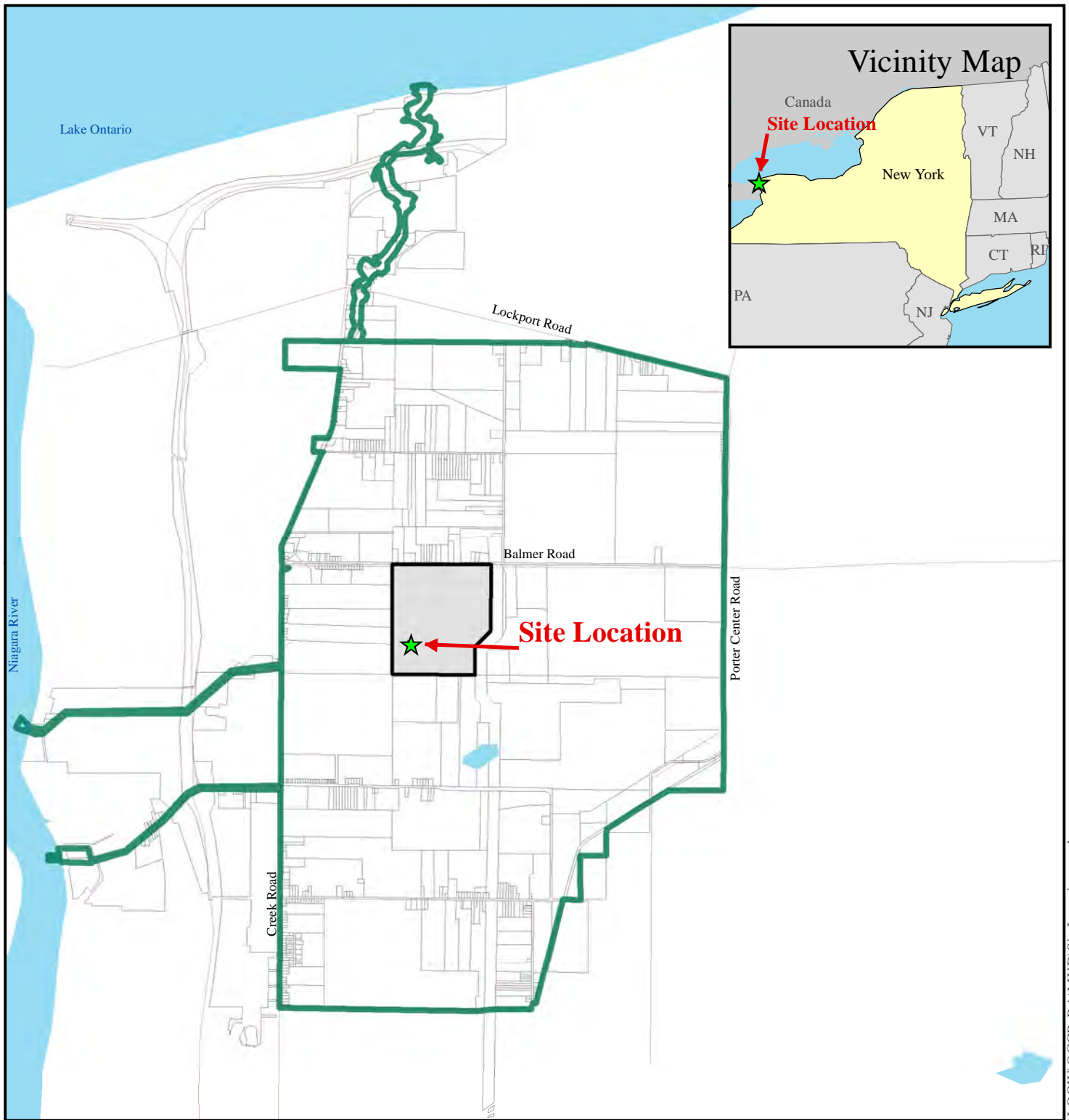


ATTACHMENT A
Figures

This Page Intentionally Left Blank



LEGEND

- SiteLocation
- Property Ownership Boundary Occidental Chemical Corporation
- Tax Parcel Boundaries
- Lakes/Rivers/Ponds
- Roads
- Former LOOW Boundary with Easements

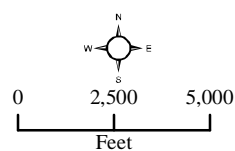
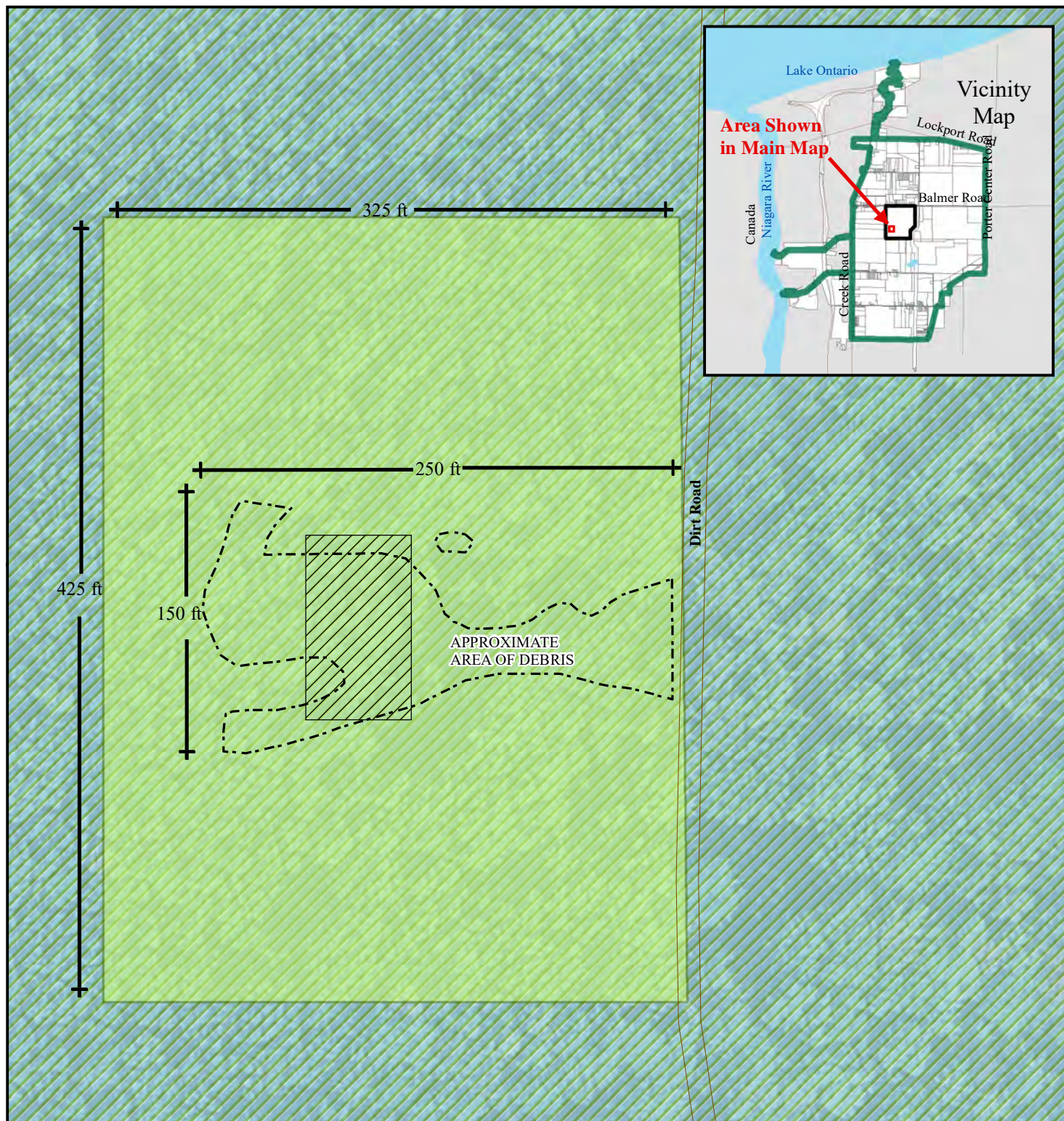


Figure 1
Occidental Chemical Corporation
Site Location

LAKE ONTARIO ORDNANCE WORKS
OCCIDENTAL CHEMICAL CORPORATION PROPERTY
NIAGARA COUNTY, NEW YORK



US Army Corps
of Engineers®



Path: N:\GIS\Northeast\New York\LOOW\OCCP_RAMXD\OCCPSiteMap.mxd

LEGEND

- | | |
|---|---|
| Approximate TNT and Lead Impacted Area | Property Ownership Boundary Occidental Chemical Corporation |
| Approximate Area of Debris – Approximate Extent of Slightly Elevated Areas Within AOC 1 (TEC, 2002) | Tax Parcel Boundaries |
| Area of Concern 1 (AOC 1) | Former LOOW Boundary with Easements |
| New York State freshwater forested/shrub wetland (LE-18) | Roads |

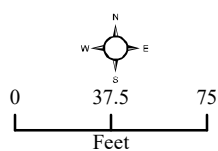
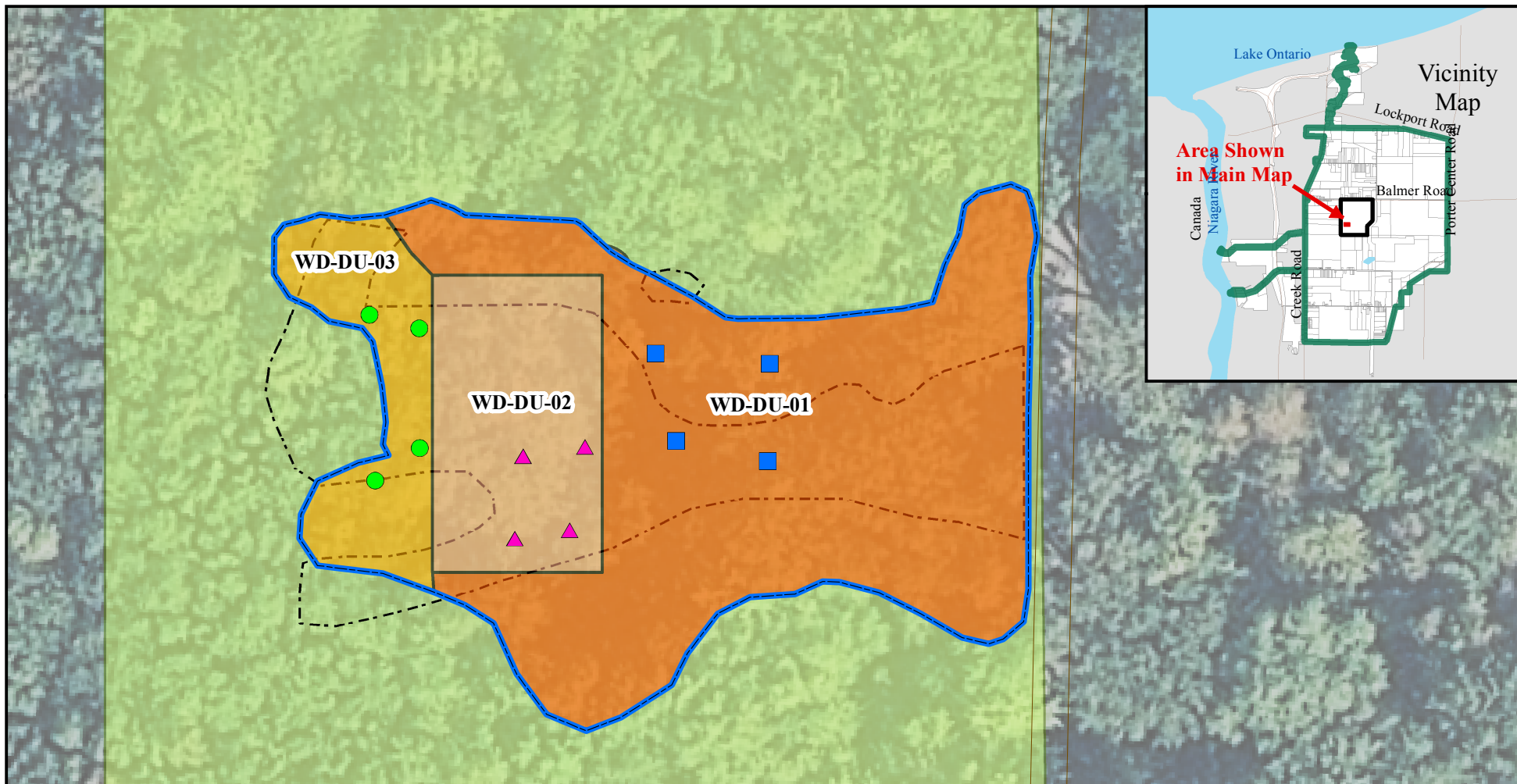


Figure 2
Occidental Chemical Corporation
Property Site Map

LAKE ONTARIO ORDNANCE WORKS
OCCIDENTAL CHEMICAL CORPORATION PROPERTY
NIAGARA COUNTY, NEW YORK



US Army Corps
of Engineers®



LEGEND

Waste Disposal Characterization

Sampling Location

- WD-DU-01
- ▲ WD-DU-02
- WD-DU-03

Waste Disposal Characterization

Decision Unit (DU)

- WD-DU-01
- WD-DU-02
- WD-DU-03

Surveyed Raised Area of Debris

Approximate Area of Debris (TEC, 2002)

Area of Concern 1 (AOC 1)

Roads

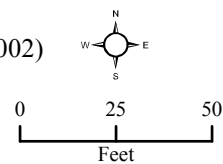
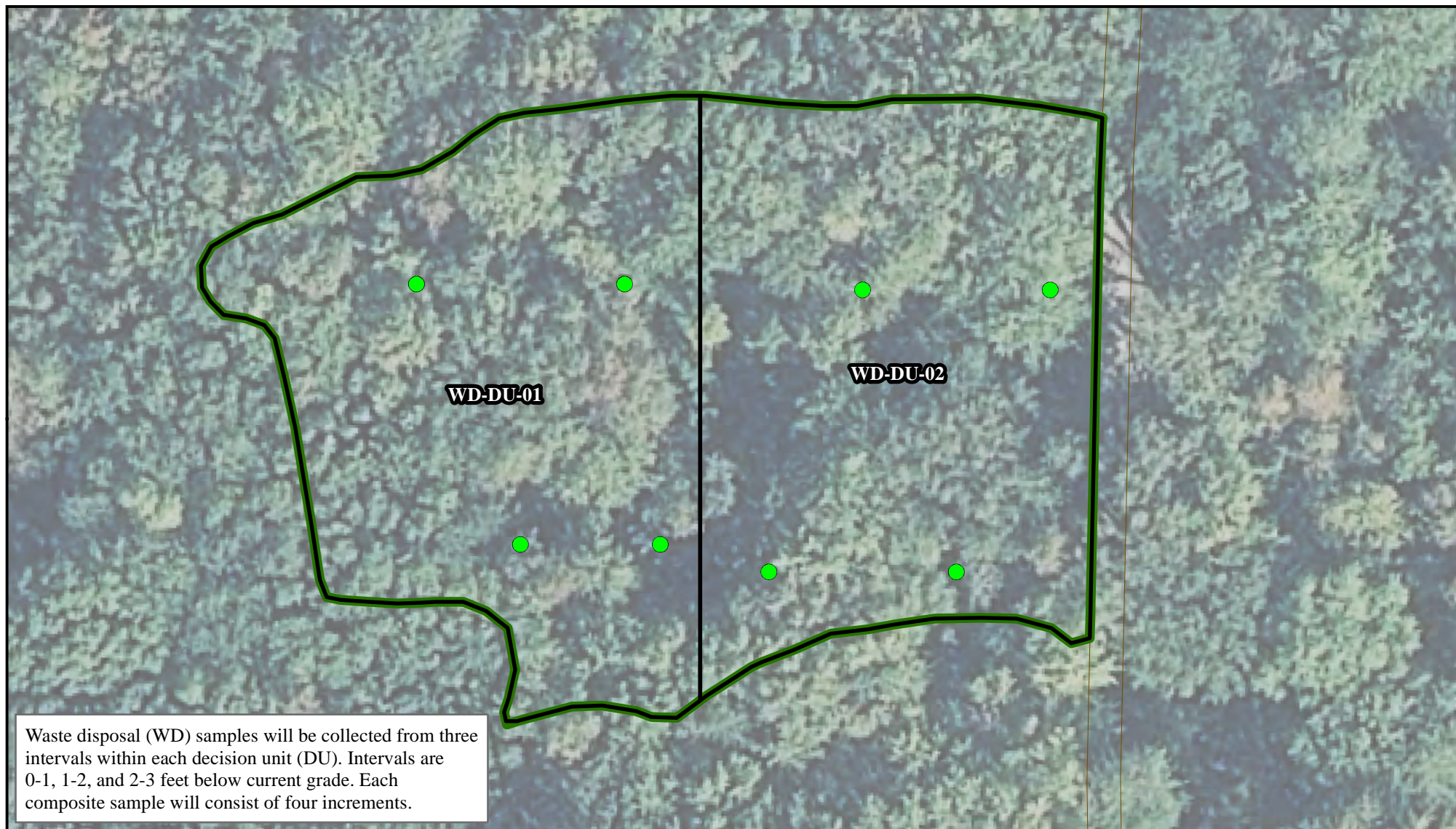


Figure 3
2018 Waste
Characterization Soil
Sampling Decision
Units (DUs)

LAKE ONTARIO ORDNANCE WORKS
OCCIDENTAL CHEMICAL CORPORATION PROPERTY
NIAGARA COUNTY, NEW YORK



US Army Corps
of Engineers®



LEGEND

- Composite Sample Increment Location
- Site Perimeter
- Waste Disposal DU
- Roads

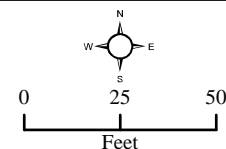
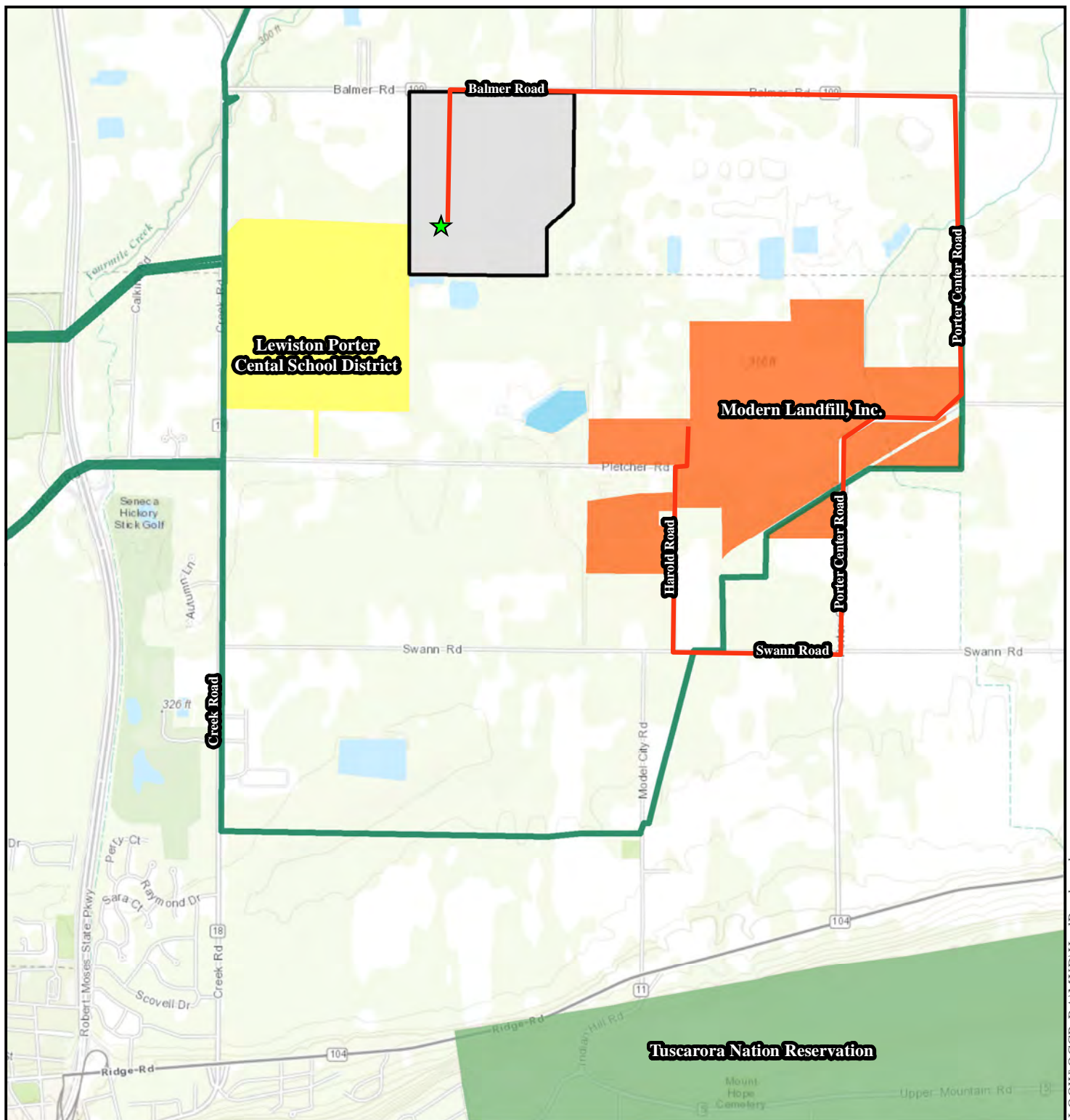


Figure 4
2019 Waste Characterization Soil
Sampling Decision Units (DUs)

LAKE ONTARIO ORDNANCE WORKS
OCCIDENTAL CHEMICAL CORPORATION PROPERTY
 NIAGARA COUNTY, NEW YORK



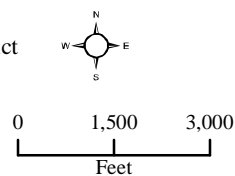
US Army Corps
of Engineers®



LEGEND

- Work Site Location
- Haul Road
- Former LOOW Boundary with Easements
- Lakes/Rivers/Ponds
- Property Ownership Boundary Occidental Chemical Corporation
- Lewiston Porter Cental School District
- Tuscarora Nation Reservation
- Modern Landfill, Inc.

Data Sources: USACE, ESRI Online, U.S. Census Bureau



**Figure 5
Haul Road**

**LAKE ONTARIO ORDNANCE WORKS
OCCIDENTAL CHEMICAL CORPORATION PROPERTY
NIAGARA COUNTY, NEW YORK**



**US Army Corps
of Engineers®**



LEGEND

— Roads

 Approximate Revised Elevated Debris Area
(Based on Pre-Construction Site Survey)

Confirmation Sampling Decision Units

Excavation Area

Perimeter

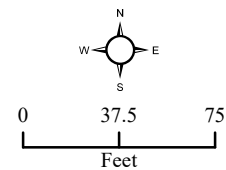
Laydown Area

Soil Stockpile

 Approximate Boundary of Cleared Area
(Based on Preconstruction Survey) and
Estimated Area of TNT Impacted Soil

Area of Concern 1 (AOC 1)

 Approximate Area of Debris – Approximate
Extent of Slightly Elevated Areas Within
AOC 1 (TEC, 2002)



Notes:

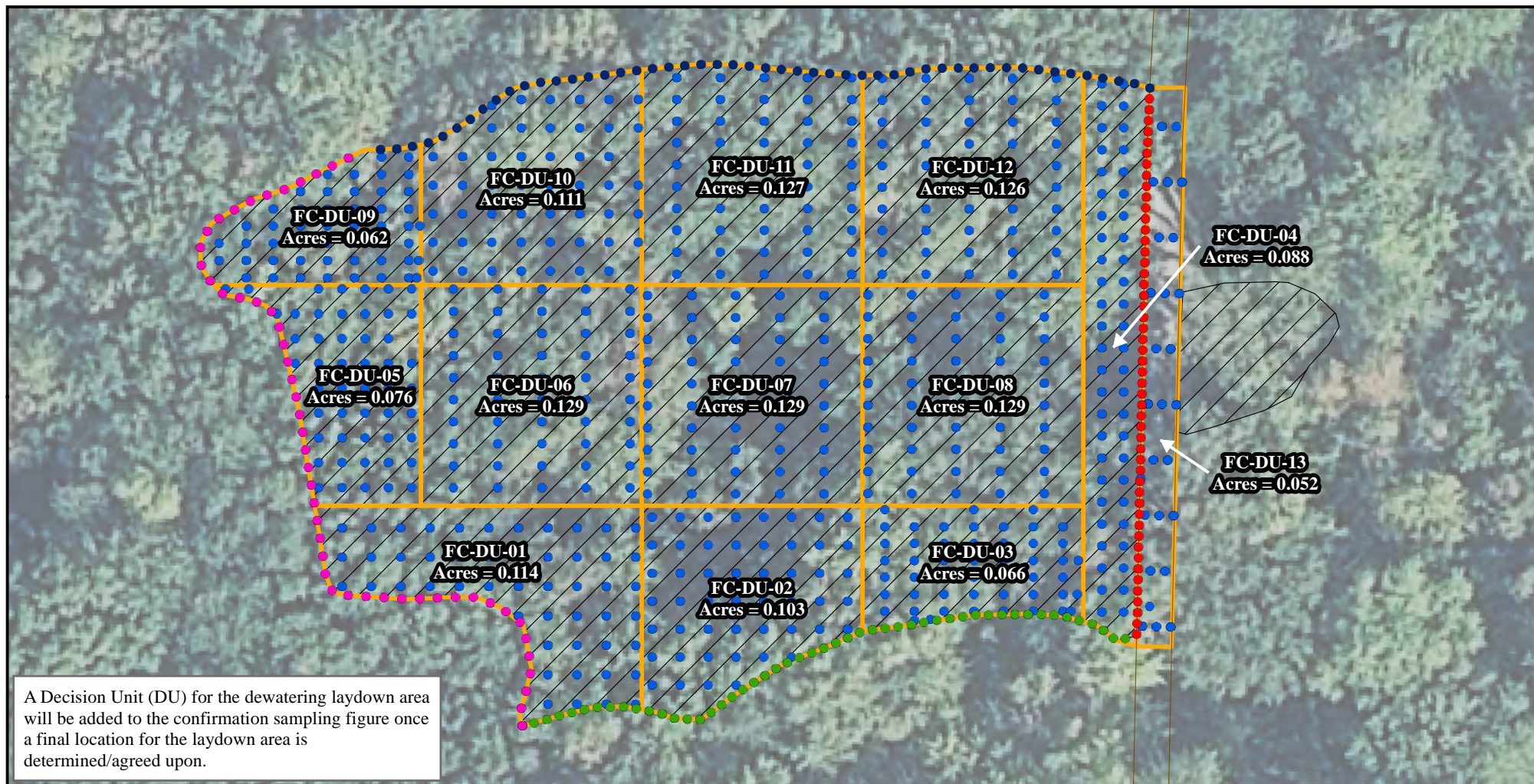
1. TNT results are in units of micrograms per kilogram ($\mu\text{g/kg}$), as reported by the laboratory.
2. The TNT Remedial Action Objective (RAO) is $1,800 \mu\text{g/kg}$.
3. Results for lead were less than the RAO (400 mg/kg) and the New York Codes, Rules and Regulation (NYCRR) Part 375, Table 375-6.8(a), Unrestricted Use Soil Cleanup Objectives (63 mg/kg) for all sampling results.

LAKE ONTARIO ORDNANCE WORKS
OCCIDENTAL CHEMICAL CORPORATION PROPERTY
NIAGARA COUNTY, NEW YORK



**US Army Corps
of Engineers®**

Figure 6
Confirmation Soil Sampling Results
for 2,4,6-Trinitrotoluene (TNT)



LEGEND

- Excavation Confirmation ISM Increment Locations
- Roads
- Sidewall ISM Increment Locations
 - DU-14
 - DU-15
 - DU-16
 - DU-17
- Approximate Boundary of Cleared Area (Based on Preconstruction Survey)
- Excavation Base or Access Road Confirmation Sampling DUs

0 25 50
Feet



Figure 7
2019 Confirmation Soil
Sampling Decision Units

March 2019

LAKE ONTARIO ORDNANCE WORKS
OCCIDENTAL CHEMICAL CORPORATION PROPERTY
NIAGARA COUNTY, NEW YORK



US Army Corps
of Engineers®

This Page Intentionally Left Blank